



3300H

On Combine Whole Grain Analyser



**On-the-go
Protein, Oil, Starch,
Fibre and Moisture
Analysis.
Real Time
Field Mapping
Logistics Software**

Know your fields...Know your grains



**Next
Instruments**



Know your fields...Know your grains.

As farmers you only have around 40 years to "Get it Right". As such you need to make decision based on the best information available. To make changes in how you grow and harvest your grain then you need the right tools to measure the Nitrogen in your fields and crops.

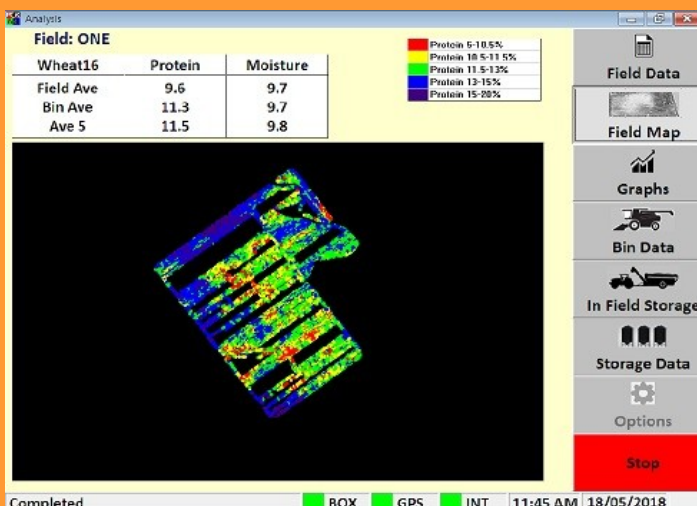
The CropScan 3300H On Combine Analyser measures Protein, Oil, Starch, Fibre and Moisture in grains and oil seeds in real-time as they are harvested.

Real-time Protein measurements provide a means of segregating and blending grain in the field. Increase your income by 10-30% by measuring your grain and selling it for its real value.

"Become a Price Maker rather than a Price Taker."

Yield relates to soil and moisture where as Protein relates to the Nitrogen Uptake and Availability. By combining the Protein and Yield data you can see the complete picture of what is happening in your fields. Field maps can be generated for:

- Protein, Oil, Moisture
- Yield
- Nitrogen Removal
- Gross Margin
- Protein/Yield Correlation



CropScan 3300H On Combine Analyser provides:

- **In Paddock Blending based on Protein:**
Are you leaving money in the field?
Increase Income by 10-30%.
- **On Farm Segregation and Storage:**
Increase Profit by \$30-50 per ha.
- **Moisture:** More accurate moisture measurements allows the combine to start earlier and finish later.
- **Protein/Yield Optimisation:** Reduce Input Costs, Increase Yield & Protein.
- **Grain Data Management: Logistics View.**
Manage Grain Segregation and Storage directly from the combine.



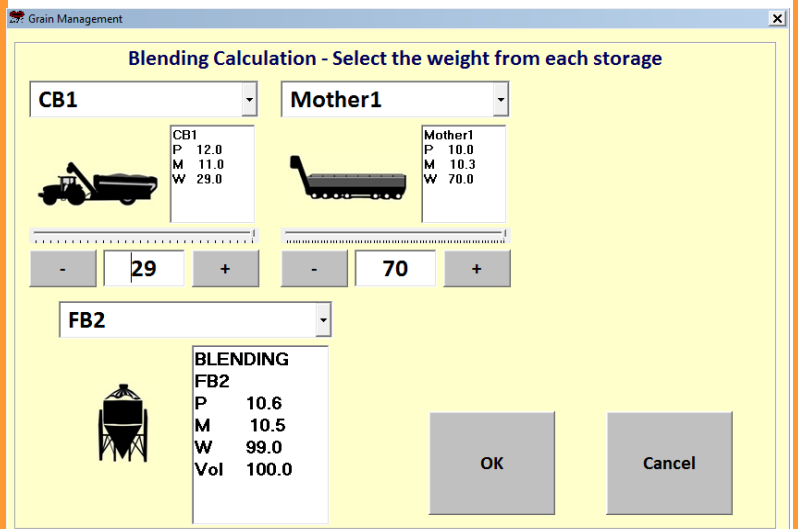
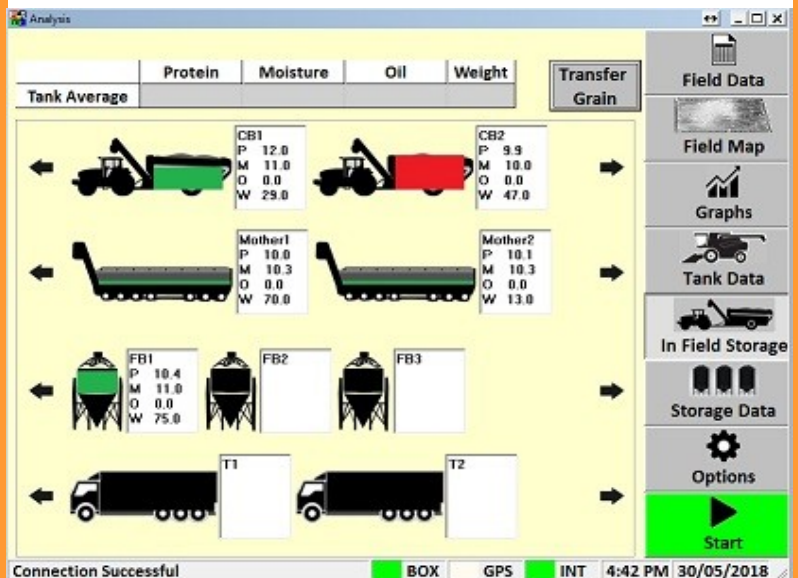
Fits all Combines:
Red, Green,
Yellow or Lime.



Manage Grain Quality from Combine:

The CropScan 3300H software provides a screen that allows the combine operator to direct how much and where grain is segregated and stored on farm or sent to the silo.

The CropNet Blending Estimator optimises the amount of grain to blend from each field bin, grain cart or mother bin into a truck, silo, shed or grain bag.



The protein, moisture, oil, starch and fibre data can be stored in the CropScan 3300H PC as

- Running Averages
- Field Maps
- Bin and Truck

The data can be exported directly to a remote PC and posted to the CropNet web site where the data can be viewed from a smart phone or tablet. A summary report can be sent by email or SMS to a designated address.

Protein and Yield Maps provide a more complete picture.

Protein and Yield Field Maps:

Protein and Yield mapping provides a more complete picture of the Nitrogen Uptake and Availability in your fields.

Proteins contain 17.5% of Nitrogen by weight? For every tonne of Wheat or Barley stripped from the field between 16-32Kg of Nitrogen is removed from the soil.

The CropNet Mapping Service provides Protein, Yield, Nitrogen Removal, Gross Margin and Yield/Protein Correlation Quadrant Maps... the data is easily converted into Variable Rate prescriptions.

Managing Nitrogen Fertilizer Applications:

Reduce risk... Find the "Sweet Spot"
Balance Protein and Yield across the field.
Reduce fertilizer use... Reduce Cost...

Soil Testing:

Strategically identify zones for soil testing based on Protein/Yield Correlations Quadrants...

VRF Equipment Investment:

"Get it less wrong". Reduce Risk...
Protein/Yield Correlation Quadrant Maps ensure more accurate VRF prescriptions.
Increasing ROI through accurate prescriptions.

