



CropScanAg
Solutions



CropScanAg Cloud

CropScanAg Cloud is now available to users of the CropScan 3000H and 3300H On Combine Analyser to safely store field data in their own secure private account.

Sign Up:

CropScan users running version CropScan Analysis_v4.1.31 software can now sign up for a free CropScanAg Cloud account. Go to www.cropscanag.com website and click on the Sign Up button at the bottom of the Home page. Enter your email address and a unique password to create an account.

Setup:

Enter your sign in credentials by clicking in Sign In page located in the Wi-Fi Setup Menu of the CropScan Analysis software.

Syncing:

When the combine comes into a Wi-Fi Connection area the CropScan Software will automatically sync you data to your CropScanAg Cloud account.

Downloading:

Next Instruments will be releasing a File Transfer manager for users to download data from the CropScanAg Cloud.

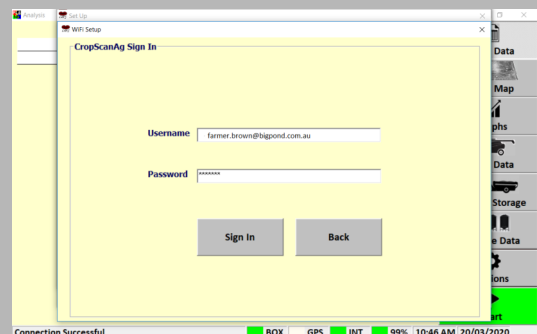
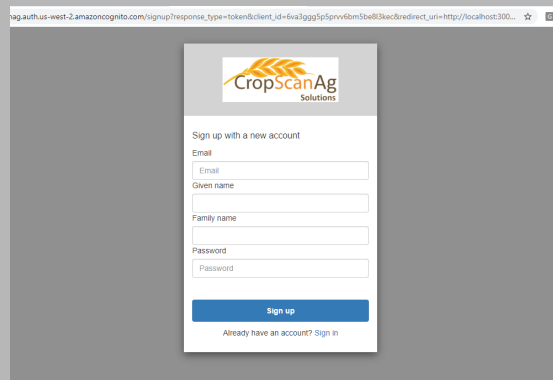
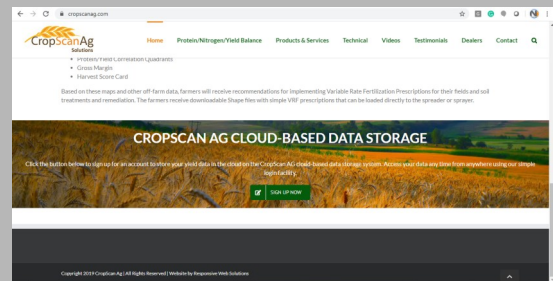
Integration:

CropScanAg Solutions are currently setting up API call's to John Deere Operations Centre and CNHi AFS and PLM Connect.

www.cropscanag.com

Store

Filed Maps and Farm Data Files in your own Cloud account



Contact Sydney Office
Denver(USA)Office

Email: sales@nextinstruments.net
Email: victoria.clancy@nextinstruments.net

Ph: +612 9771 5444
Ph: +1 (720) 435 1139