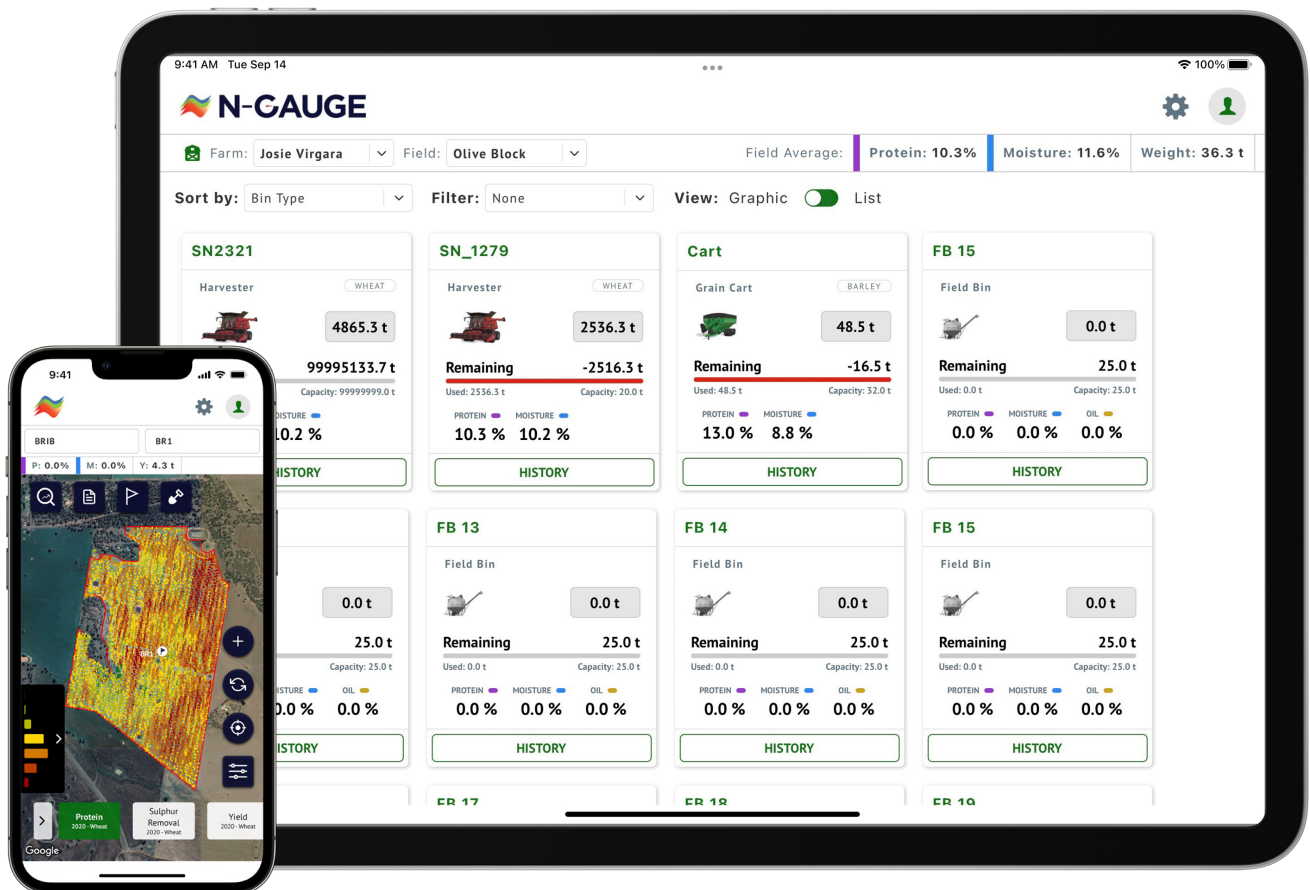


# N-GAUGE

## Harvest Manager



It's time to  **N-GAUGE** your data

The CropScanAg N-GAUGE Harvest Manager subscription connects growers to their harvest data. The N-GAUGE App presents the Protein, Moisture, Oil, Yield and Grain Tank weights from the CropScan 3300H On Combine Grain Analyser directly to your smart phone or tablet. The partnering feature synchronises data sharing across the farm to your team and on to grain brokers, advisors and agronomist. The real time Protein, Moisture, Oil and Yield data improves managing grain deliveries and meeting grain contracts. The new Harvest Manager module map feature brings your harvest tracking and field map data to life. The Harvest Manager includes:

- Create and assign grain contracts
- Add or delete storage locations (new combine harvester storage location now available).
- Transfer the load to and from the field bins, mother bins, grain bags, trucks, bin/silos, bunkers, sheds or to the end grain buyer.
- View current field averages and stack averages
- Split grain transfers across two storage locations
- Simulate grain blending across storage locations
- Create and email site storage reports
- View Protein, Moisture, Oil and CANBUS Yield Map layers (Yield available on CNHi Combines only)
- Customise Layer Legends to your colour palette.



# N-GAUGE



## Map view

View your Protein, Moisture, Oil and Yield Maps from your smart device.



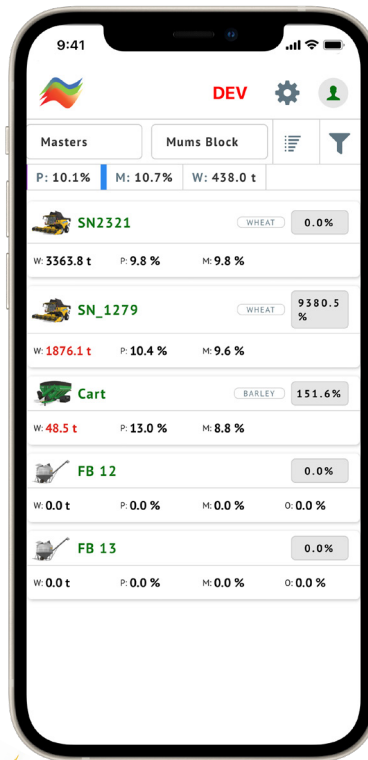
## Virtual Grain Storage

View grain quality & quantity across virtual grain storage locations to improve grain marketing and deliveries.



## Grain Contracts

Create Grain Contracts:  
Assign Buyer, Grain Type,  
Quantity, Contract No and Price.



## Blending Estimator

Maximise and target grain contracts and deliveries. Blend grain based on stored protein, moisture & oil.

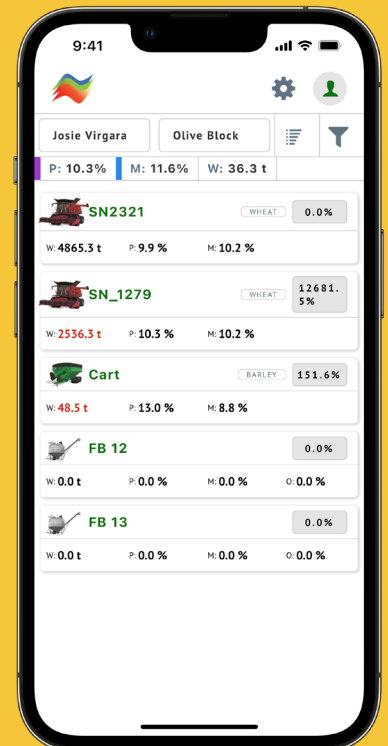
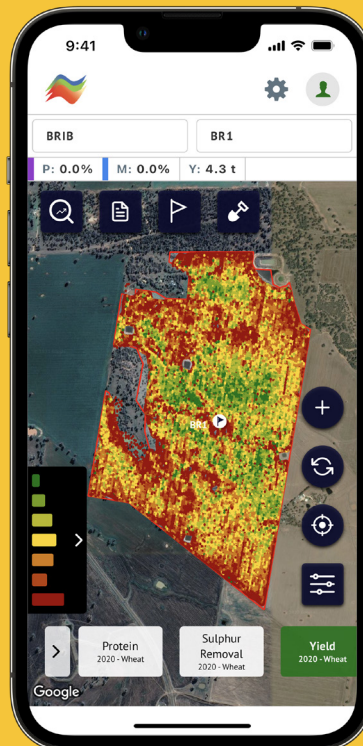
# N-GAUGE

The N-GAUGE Harvest Manager is an annual subscription service to simplify harvest data management for Protein, Moisture, Oil and Yield collected from the CropScan 3300H On Combine Grain Analyser. The Harvest Manager comes with 2 modules:

**Grain Logistics** - View grain quantity & quality across virtual grain storage locations to improve grain marketing and deliveries.

**Harvest View** - View your Protein, Moisture, Oil and Yield Maps from your smart device.

To find out more on subscriptions and pricing contact CropScanAg to link you with your nearest approved dealer.



Download now from

Download on the  
**App Store**

GET IT ON  
**Google Play**

| E : sales@cropscanag.com | W : www.cropscanag.com | P: +612 9771 5444 |