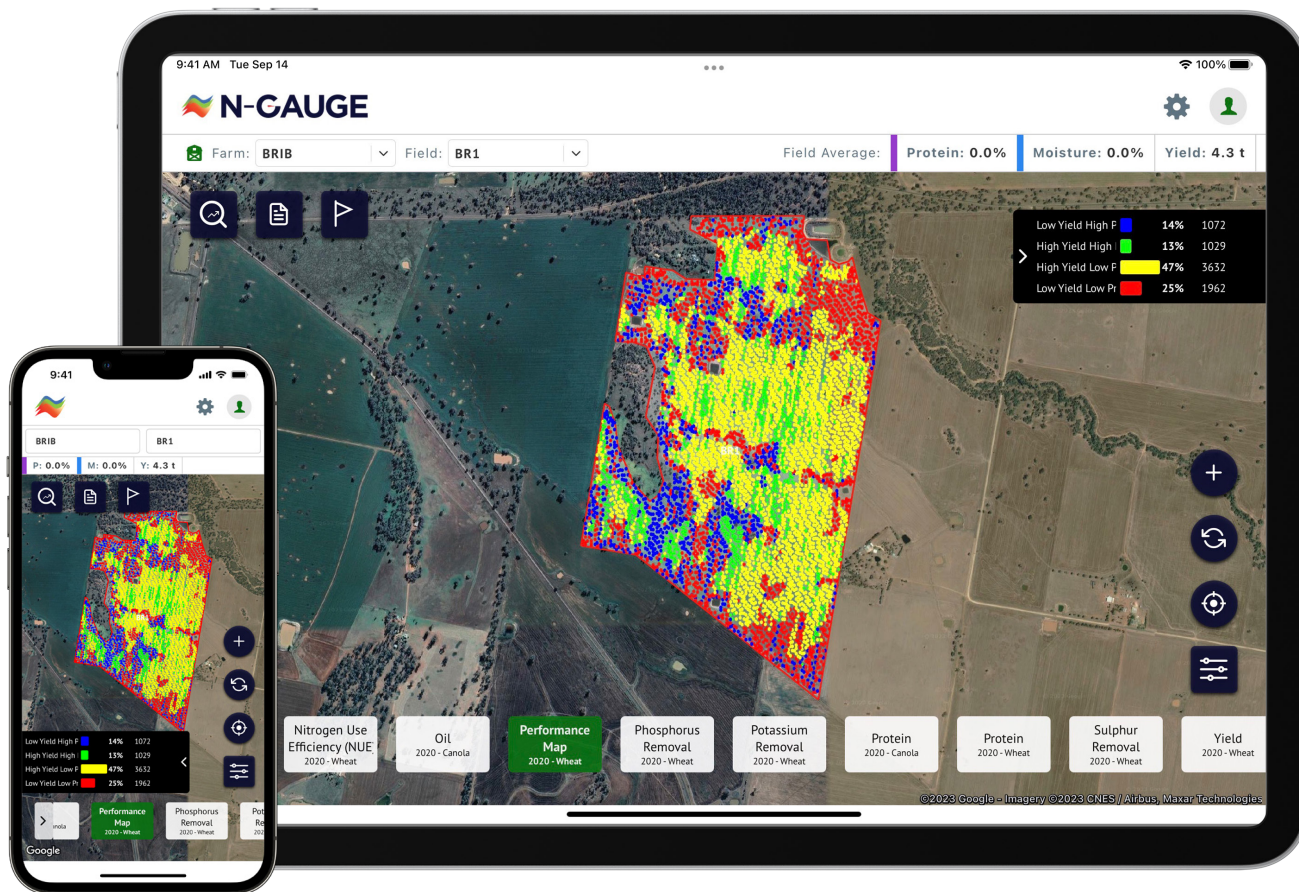


N-GAUGE

Nutrient Manager



From **Protein** to **Prescription**

Variable Rate Simplified

Your harvest data is the key to improving the performance and input efficiency of your next crop. Grain Protein and Yield data from the CropScan 3300H On Combine Grain Analyser, provides leading insights into crop performance across the field.

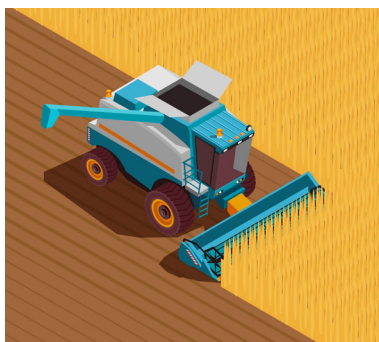
The N-GAUGE Analytics correlates the Protein and Yield layers for each field to simply identify Nitrogen limited zones. All map layers including the Field Performance Map can be quickly turned into a VRF prescription map for N,P,K and S from any smart phone or tablet.

The N-GAUGE Nutrient Manager allows subscribers to view, assess and report on your harvest performance for Protein, Moisture, Oil and Yield.

The built-in analytics generate a suite of formulated layers for:

- Protein/Yield Correlation Quadrants (Field Performance Maps)
- Nitrogen, Sulphur, Phosphorus and Potassium Removal (Nutrient Removal Maps)
- Nitrogen Use Efficiency (NUE)

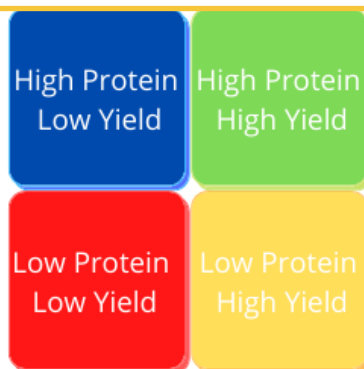
The N-GAUGE API connection will export your VRF prescriptions to the CNHi Connect Portal or John Deere Operations Centre.



MEASURE

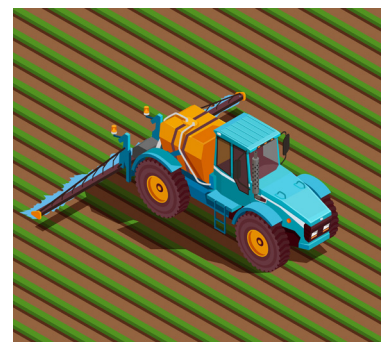
The CropScanAg Cloud Server collects and stores your harvest data from the CropScan 3300H. N-GAUGE Nutrient Manager syncs the harvest data to your smart device where it is easily viewed. N-GAUGE Nutrient Manager generates a set of unique field maps:

- Field Performance
- N,P,K,S Removal
- Nitrogen Use Efficiency and reports for:
- Harvest and Field Performance
- Fertilizer and Soil Test
- Notes



MANAGE

Grain Protein combined with Yield allows farmers and advisors to assess crop performance. The Protein "Sweet Spot", i.e., 11.5%, is an indicator of the Nitrogen uptake and availability. Zones where the Protein is less than 11.5% indicate Nitrogen limited the crop yield potential. Zones where the protein is greater than 11.5% indicates the nitrogen application has been in excess. N-GAUGE Field Performance Maps identify these zones using the 4 zone correlation quadrant analysis.



GROW

N-GAUGE Nutrient Manager Prescription Creator tool allows growers to create VRF prescriptions layers directly from their smart device.

Prescription maps can be created in a few simple steps using a Contoured or Gridded method orientated to your AB lines. Select your implement and product to generate and export your prescription maps to our partner API's with CNHi and John Deere.

N-GAUGE

The N-GAUGE App has several features to better measure, manage and grow future crops. The built in features include:

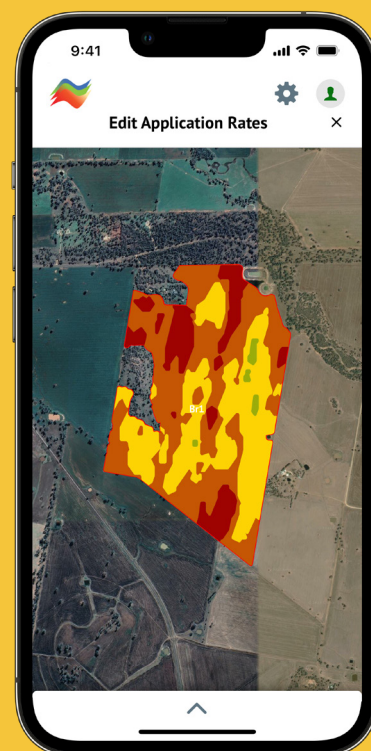
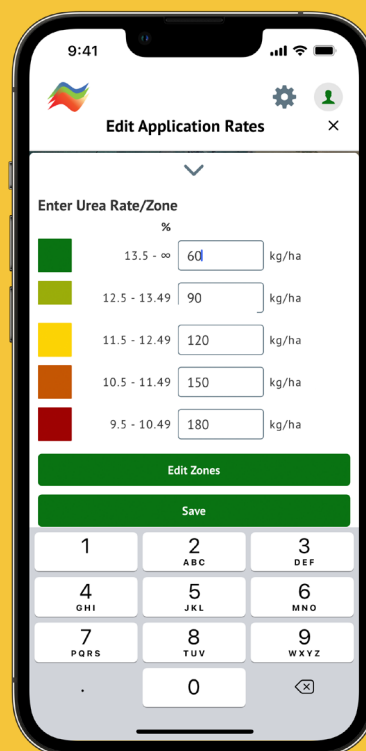
Grain Logistics - Manage Grain quality and quantity via the Grain Logistics module.

Reports - View your harvest performance & fertiliser requirements. View and export Harvest, Fertiliser, Field Performance and Soil Testing reports.

Prescription Creator - Create gridded or contoured prescriptions. Add low and high rate test strip trials easily using the edit and node tools. Save and export to our partnered machinery platforms with CNHi Connect and John Deere Operations Centre.

Soil Testing - Generate soil testing sites based off your harvest performance maps. Simply drop pins and export shape files and share with your local soil testing provider.

Notes - Create and drop note pins across the farm.



Download now from



| E : sales@cropscanag.com | W : www.cropscanag.com | P: +612 9771 5444 |