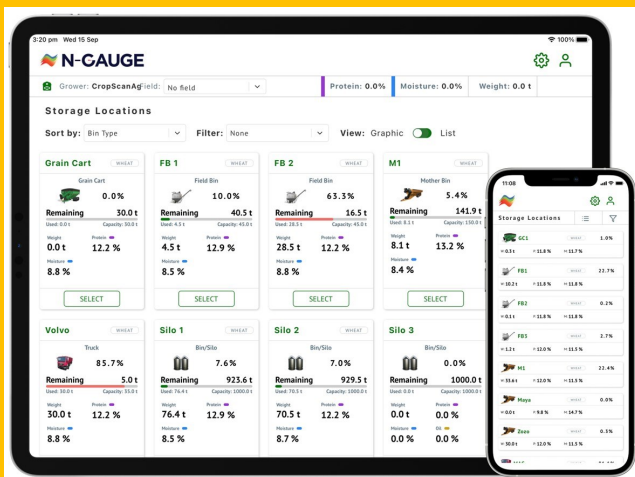




MEASURE...MANAGE...GROW

The CropScan On Combine Grain Analyser and N-GAUGE Apps offer a revolutionary system to increase the quantity and quality of grains in the field and on the farm.



Investment Brochure

www.cropscanag.com

Introduction

Next Instruments, trading as CropScanAg, is an established manufacturer of analysers for the agriculture and food industries.

In 2019, the CropScan 3300H On Combine Grain Analyzer was introduced to measure Protein, Moisture and Oil in grains and oil seeds as they are harvested in the field.

In 2021 CropScanAg launched CropScanAg N-GAUGE Mobile Apps to expand and complement the CropScan 3300H analyzer by delivering data to farmers and their agronomists via their smart devices.

Together the CropScan 3300H and N-GAUGE Mobile Apps provide a complete solution for implementing Variable Rate Fertilization applications for farmers.

Our IMPACT Mission

To increase the world production of cereal grains and oil seeds by 30%, thereby addressing the world food shortage, reducing Nitrogen fertilizer usage and reducing CO2 and NO2 emissions.

The Problem

The Yield Gap between the achieved and the potential Yield of cereal crops is costing farmers billions of dollars in lost income. To Close the Yield Gap, farmers need a means of developing reliable and accurate Variable Rate Nitrogen Fertilization applications that produce a Positive Yield Response to the addition of Nitrogen fertilizer.

Our Solutions

CropScanAg provides a revolutionary Nutrient Management System for grain farmers whereby a unique set of in-field and on-farm sensors are used to measure and quantify crop performance. CropScanAg Cloud server generates field maps that identify zones where Nitrogen has limited the crop's Yield potential. By measuring the Nitrogen and Moisture Uptake and Availability across the field, accurate Variable Rate Fertilizer Prescriptions can be developed that will provide a Positive Yield Response to the addition of Nitrogen fertilizer.

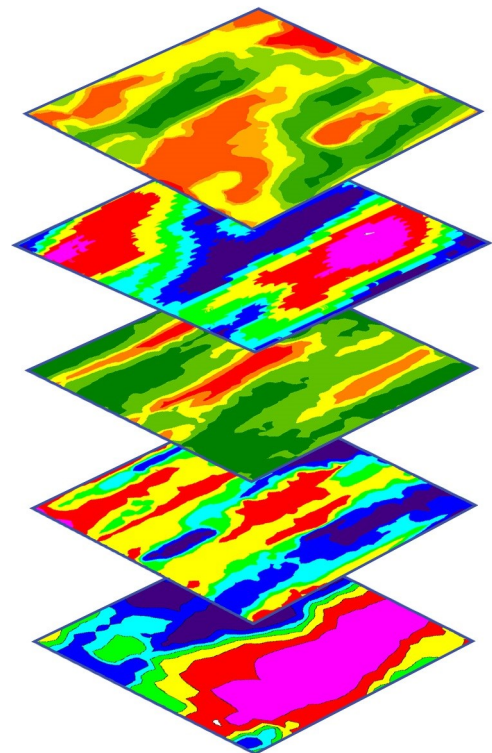
The Market Opportunity

- 450,000 Farmers around the world
- 300,000 Existing Combines around the world
- 30,000 New Combines manufactured each year
- \$330,000,000 p.a. potential market

The Business Model

5 yr. Hardware and Data Package

- CropScan 3300H On Combine Grain Analyzer
- CropScanAg Cloud and N-GAUGE Mobile App providing:
 - ◆ Protein, Yield, Elevation, Soil Moisture Layers
 - ◆ Protein/Yield Correlation, Nitrogen Use Efficiency and Water Use Efficiency Performance Layers
 - ◆ Formulated Variable Rate Applications
 - ◆ Monitor and Manage Carbon Sequestration
 - ◆ Monitor and Manage GHG Emissions





Complete Solution for Nutrient Management



What makes CropScanAg unique in the Precision Agriculture industry

CropScanAg is the only nutrient management system that uses Protein measurements off the combine harvester. Since Proteins contain 17.5% of Nitrogen by weight, then measuring Protein in the grains and oil seeds provides a direct measurement of Nitrogen Availability and Uptake by the crop. The CropScan 3300H On Combine Grain Analyser, CropScanAg Cloud App and CropScanAg N-GAUGE Mobile Apps provide a complete solution for managing grain Quality (Protein and Oil) and Quantity (Yield) on farm. Protein, Moisture, Oil, Yield and Elevation are collected off the combine and Soil Moisture and Rainfall are collected from on farm sensors. The N-GAUGE Harvest Manager App provides management tools to monitor and direct the flow of grain from the field to the silo. The CropScanAg Cloud analytics generates a complete suite of unique and proprietary field maps. The N-GAUGE Harvest Manager App delivers these tools, maps and analytics to farmers on their Smart Phones, iPad or Android tablets.

The N-GAUGE Nutrient Manager App gives farmers and their agronomist an independent assessment of the crop performance based of the Quality and Quantity of the crop using Protein/Yield Correlation, N, P, K and S Removal, Nitrogen and Water Use Efficiency assessments. The CropScanAg Cloud Server develops formulated Variable Rate Fertilizer prescriptions automatically and downloads them to the CNHi and John Deere platforms where they can be sent directly to their Seeder, Spreader or Sprayer.



Grain Logistics

Increase crop payments through in-field blending and on-farm segregation based on Protein measurements



Superior Moisture

Increase harvest efficiency through more accurate Moisture measurements that allow the farmer to harvest longer



Nitrogen Management

Increased Yield through better nutrient management based on Protein, Nitrogen and Yield

What is our Business Model?

CropScanAg has a unique opportunity to become the market leader in a new category of the Precision Agriculture industry, i.e., NIR Grain Analysers. As the only manufacturer of Near Infrared Transmission (NIT) On Combine NIR Whole Grain Analysers, then our technology is the most accurate system for measuring Protein in grains and oil seeds off the combine. Proteins contain 17.5% of Nitrogen by weight. As such, measuring Protein in the grains and oil seeds provides a direct measurement of the Nitrogen Availability and Uptake for the crop.

The N-GAUGE Mobile App modules provide the management tools to utilise this unique Protein/Nitrogen data layer to increase Yield and Protein/Oil in the crops.

Our business model is based on offering farmers a complete solution to Nutrient Management across their farm. A 5 year strategic plan that identifies the 4 performance zones within each field and allows the farmer, their agronomist and our soil experts to increase the productivity (Yield) of crops and to balance out the quality (Protein and Oil). The system includes the hardware purchase, i.e., CropScan 3300H, and annual subscriptions for the N-GAUGE Apps.

Traction.

We have sold and installed more than 800 CropScan On Combine Grain Analysers around the world.

We have supply agreements with CNH Industrial, AGCO and Landpower (Claas) in Australia.

We are a Trimble Select Business Partner for the USA and ANZ.

We have strong relationships at the corporate levels within CASE IH, New Holland, Trimble and Topcon.

We are growing quickly at approximately 30% p.a.

Funds Required?

We are looking to raise A\$2 million.

These funds will be used to expand our sales and service operations in the USA/Canada, Europe, Asia and ANZ.

We need to raise our brand awareness amongst farmers and the PA industry through trade shows, advertising, social media etc.

We need operating capital to allow us to increase the production volume.

Contact us:

Phil Clancy: +612 9771 5444

Email: phil.clancy@nextinstruments.net

Management Team

CropScanAg has brought together a team of experienced and enthusiastic personnel from around the world.

Mat Clancy, Managing Director.
Co-founder of Next Instruments and founder of CropScanAg Solutions.



Ed Scott, Product Manager, BSc. Ed is a soil systems scientist involved in the Australian agricultural industry



Ian Beecher-Jones, Mapping Services Manager, has been a precision farming adviser for several years.



Joel Salazar, Software Engineer, has been responsible for all software development within Next Instruments for 11 years.

Michael Eyres, Soil Scientist, B. Bus. Michael is a soil systems engineer with Field Systems, a strategic soil management research and advisory company based in South Australia.



Victoria Morris, North American Manager. Dip Marketing. Victoria is responsible for sales and marketing in North and South America.



Phillip Clancy, Founder of Next Instruments. MBA, BChem Eng(Hons). Formed Next Instruments in 2010 as a joint venture with Mathew Clancy. Phil brings with him 40 years experience in Near Infrared spectroscopy and chemometric analysis.

