



3000X

On Farm Grain Analyser



**MEASURE
MANAGE GROW**

with



cropscanag.com



CropScan 3000X

On Farm Grain Analyser

THE TECH

The CropScan 3000X Grain Analyser is a bench top NIR analyser designed for rapid measurement of protein, moisture, starch and oil in wheat, barley, corn, soybean, canola, oats, triticale, lupins and other cereals grains and oil seeds.

THE FEATURES

- Built-in Touch Screen PC Operation
- 60 seconds per analysis.
- Dial-up Variable Pathlength System: 8mm, 15mm, 24mm, 28mm.
- Suitable for use in the field, in a farm office or weighbridge shed.
- CropNet Grain Data Management Software included.
- Automatically computes Test Weight, Screenings% and Retention% based on external chondrometer and sieving weight inputs.



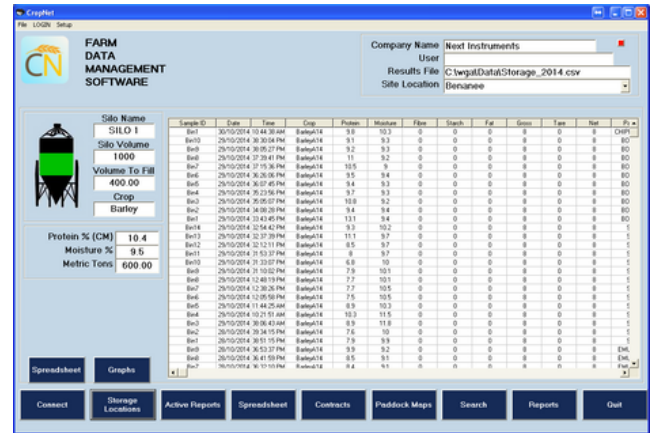
The CropScan 3000X is suitable for use wherever whole grains and oil seeds are measured.

The Cr3000X can be used in a silo or shed where grains are segregated and stored. It can be used in a grains processing plant such as an oil seed crusher, a flour mill or a food manufacturer.

CropNet Grain Data Management Software

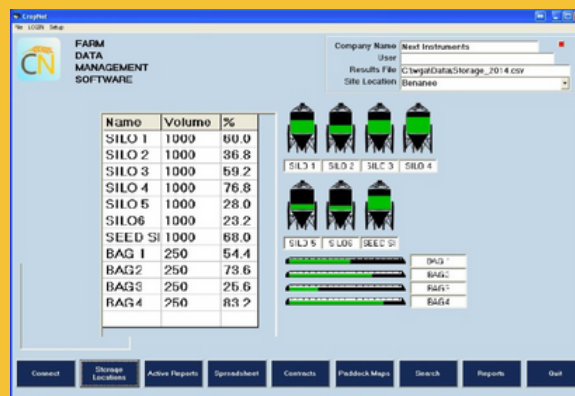
CropNet software provides farmers with a means of recording and managing the quantity and quality of grain from the field to the silo.

CropNet Grain Data Management Software reads the data from the CropScan 3000X, the tonnage from the weighbridge monitor, other associated information, i.e., paddock ID, truck ID, silo name, grade, variety etc and stores the data into a spreadsheet. The data is displayed as Reports, Tables and Graphs which can be printed or emailed.




CropNet Grain Data Management Software allows farmers to be “Price Makers not Price Takers”. CropNet provides all the tools a farmer needs to properly know how much grain is stored where and what is its value.

CropNet sets up a Virtual Farm Storage system in the CropScan 3000X's computer. Each silo, shed, bunker or grain bag is displayed as an icon on the screen. As grain is stored into a storage unit, the running average for Protein, Moisture, Oil, Starch and the total tonnage are updated in real-time on the screen.



As grain is shipped out or transferred from storage unit to storage unit, the running averages and tonnage are updated. Data fields for Variety, Grade, Farm ID, Paddock ID, Truck ID, Date and Time are available as pulled down menus. Simply record all the data required and reports can be generated based on each field. For example, recall all loads shipped from Silo 1 to customer XYZ on a certain date.



CropScan 3000B
Serial Number: 1208

HORSHAM DEV
B1 366 Edgar St
TEL: +61 2 9771 5444
EMAIL: support@nextinstruments.net

Product:	Wheat15B	Date:	8/10/2015
Sample:	W4	Time:	14:44:18
Variety:	SUNRIPE	Temp:	37.1 °C
Grade:	APW		
Tonnage:	23000		

Protein % (CM)	12.9
Moisture %	12.5

Ready Print Report

IEWS
START
SETTINGS



TECHNICAL SENSOR

WAVELENGTH	720-1100nm
OPTICAL DETECTOR	Silicon Diode Array
CALIBRATION	PLS (Partial Least Squares)
POWER	12VDC using 100-260VAC Mains or Inverter
SAMPLE PATHLENGTH	8mm, 15mm, 23mm, 28mm
SAMPLE SIZE	250ml
SCAN SPEED	2-4 seconds, 10 subscans per analysis
OPERATING TEMP	10-45 Degrees C (50-122 Degrees F)
DISPLAY	Touch Screen PC, Secondary Screen for CropNet
WEIGHT	10kgs (22lbs)
SHIPPING	340 X 330 X 290mm (13.4 X 13 X 11.4in)

APPLICATIONS

PARAMETERS	Protein, Moisture, Oil, Starch and Fiber
CROP TYPES	Wheat, Barley, Canola, Corn, Soy Beans, Sorghum, Chick Peas, Lentils, Oats, Lupins, Rice. Other Grain Types available on request